



旋转接头  
关节接头  
金属软管  
虹吸器  
扰流器  
纸芯夹头

Rotary Joints  
Swivel Joints  
Hoses  
Syphons  
Turbulator Bars  
Core Chucks



蒸汽冷凝水系统 Steam & Condensate Systems



## S 系列旋转接头

SN / SC / SCB 系列旋转接头  
虹吸器/内管

**S ROTARY JOINTS**  
SN/SC/SCB  
SYPHONS/ INTERNAL PIPES



### 江苏腾旋科技股份有限公司

地址：中国·江苏·无锡市新区梅村工业集中区新都路6号  
电话：0510 88159440 销售专线：0510 88553424 88159438  
传真：0510 88159405 邮 编：214112  
E-mail: sales@tengxuan.net  
网址：www.tengxuan.net

### TENGXUAN TECHNOLOGY CO., LTD.

ADD: No.6 Xindu Road, Meicun industrial zone, New district,  
Wuxi, Jiangsu. P.R.China 214112  
TEL: +86 510 88559440 88553424 88159438  
FAX: +86 510 88159405  
E-mail: sales@tengxuan.net  
WEB: www.tengxuan.net

XK06-007-00042

本出版物中所含与产品有关的数据和信息仅作参考，此类数据与信息不代表任何形式的担保或保证，具体情况请向腾旋公司咨询。  
错发和疏漏在所难免，技术数据亦会有所变更。出版物中照片资料版权归腾旋公司所有，未经许可不得转载。（腾旋市场部）



江苏腾旋科技股份有限公司  
TENGXUAN TECHNOLOGY CO., LTD.

# 公司介绍

www.tengxuan.net

## Introduction



腾旋科技是研制、开发和生产旋转接头及其相关产品的高新技术企业。公司长期致力于密封与磨擦技术的研究，在旋转接头领域处于国内领先地位。旋转接头研发中心已为腾旋公司赢得了91项专利。

公司拥有加工中心、数控车床及其它专业设备60余台套。严格按照ISO9001质量规范组织开展生产、销售、服务等业务。产品已在造纸、钢铁、瓦楞、纺织、印染、橡塑、化工等行业得到广泛应用。

我们不仅提供优质的产品，更提供无时不在的精诚服务；我们不仅提供技术支持，更提供行业的整体解决方案。

Tengxuan Technology Company specializes in research, development and the manufacturing of rotary joints and related products. Tengxuan is also the leading sealing technology and steam syphon expert in China, accumulating many technical patents over the years.

Tengxuan has a large machine shop facility, with over 50 state-of-the-art machines. Our products are manufactured to ISO9001 quality management standards. We have our own sales and service staff, assisting customers around the world. Tengxuan products are widely used in industries such as paper, steel, corrugating, textiles, non-wovens, rubber, plastics and chemical and food processing.

Along with our high quality products, we offer our customers the highest level of aftermarket sales and service.



精心设计、精工制造  
国际品质、国内价格  
完善的技术支持  
快捷的售后服务  
提供维护保养培训  
提供低成本配件及维修服务  
提供现场指导安装、调试服务

*Design and manufacturing capabilities*  
*In-house and field technical support*  
*Maintenance training*  
*Installation guidance and trouble shooting*

**Txuan**



# 目录 content



|                             |      |
|-----------------------------|------|
| SN 系列旋转接头 SN Rotary Joints  | 3-4  |
| SC 系列旋转接头 SC Rotary Joints  | 5-6  |
| SCB系列旋转接头 SCB Rotary Joints | 7-8  |
| 配件 Accessories              | 9-10 |

ROTARY JOINT ORDERING CODE EXAMPLE

S

N

R

050

R

-

S

Q-导热油 Hot Oil; S-蒸汽 Steam

Q-法兰 Quick Release Flange;

L-左旋螺纹 LH; R-右旋螺纹 RH

接头尺寸 Size

M-单向 Mono Flow; S-双通固定式 Dual Flow With Stationary Internal Pipe;

R、RN、RT-双通旋转式 Dual Flow With Rotary Internal Pipe

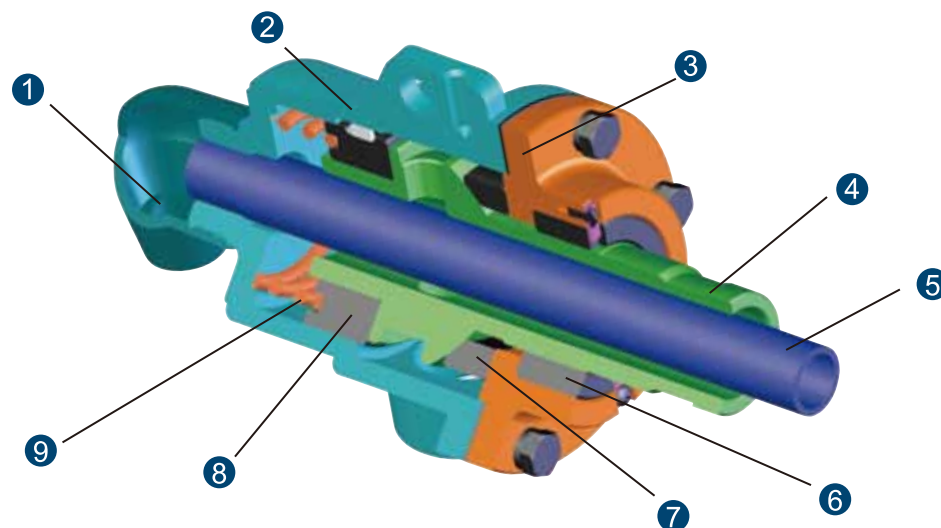
N-正球面 Standard Seal Ring, C-反球面 Convex Seal Ring

注意：随着介质、口径、压力、转速、温度的不同，使用极限也不同，在特殊条件下，请与无锡腾旋公司联系，以确定安全极限。  
Note: Maximum limits vary in relation to changes in media,size,rpm,pressure and temperature. Consult Tengxuan for safe limitations under your specific application conditions.

# SN 型旋转接头

SN Rotary Joints

**Txuan**

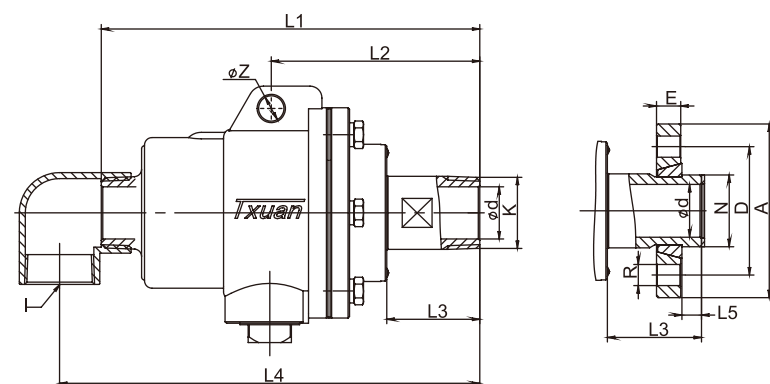


- ① 弯头 Elbow
- ② 壳体 Body
- ③ 端盖 Wear Plate
- ④ 外管 Nipple
- ⑤ 虹吸管 Syphon pipe
- ⑥ 无油轴承 Carbon Guide
- ⑦ 石墨环 Carbon Seal Ring
- ⑧ 无油轴承 Carbon Guide
- ⑨ 弹簧 Spring

|                          |   |
|--------------------------|---|
| 最高车速<br>Max. Speed       | 200 RPM (SN020—SN040)<br>150 RPM (SN040—SN065)  |
| 最大压力<br>Max. Pressure    | 20 bar / 300 psig   |
| 最高温度<br>Max. Temperature | 280°C/ 536 °F<br>超过280°C时，需要定制<br>(We offer customer designed products<br>beyond 280°C) |
| 适用介质<br>Media            | 水、蒸汽和导热油<br>Steam, Hot oil, Water   |
| 尺寸范围<br>Sizes            | 3/4" — 2-1/2"   |

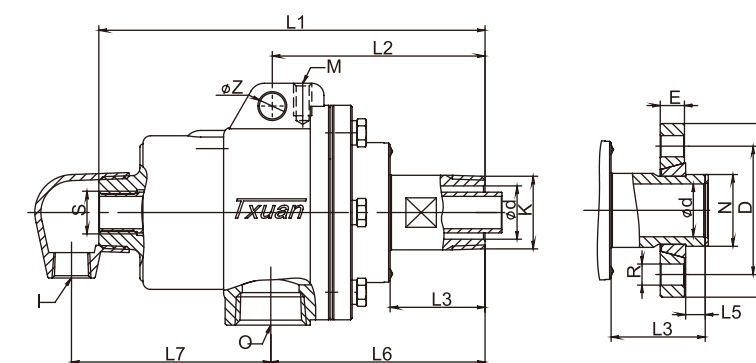
正球面密封设计；  
标准锑或碳石墨密封技术；  
双无油轴承支撑；  
支撑间距最大化；  
延长密封寿命，提高可靠性；  
易于更换；  
旋转式或固定式虹吸器。

Spherical graphite seal design  
Standard carbon graphite or antimony seal options  
Two internal carbon support guides  
Maximum carbon guide separation  
Extended seal life and increased reliability  
Easy replacement of competitive models  
Rotary or stationary syphon compatibility



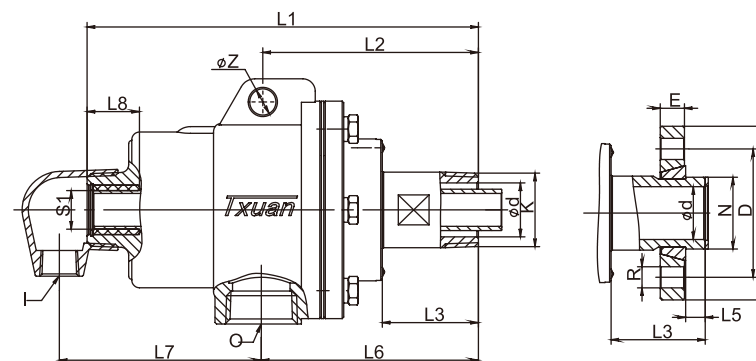
**SNM**  
型旋转接头

单通  
MONO FLOW



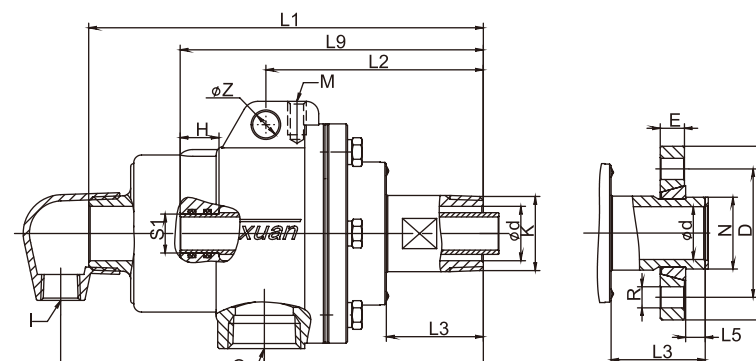
**SNS**  
型旋转接头

双通  
固定式虹吸器  
DUAL FLOW  
STATIONARY SYPHON



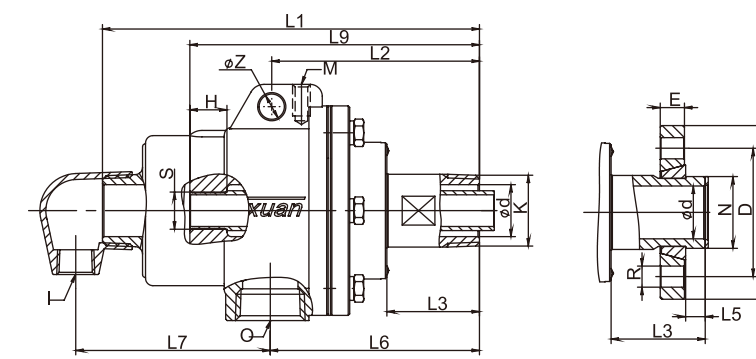
**SNR**  
型旋转接头

双通  
旋转式内管  
DUAL FLOW  
ROTARY INTERNAL PIPE



**SNRN**  
型旋转接头

双通  
旋转式内管  
DUAL FLOW  
ROTARY INTERNAL PIPE



**SNRT**  
型旋转接头

双通  
旋转式内管  
DUAL FLOW  
ROTARY INTERNAL PIPE

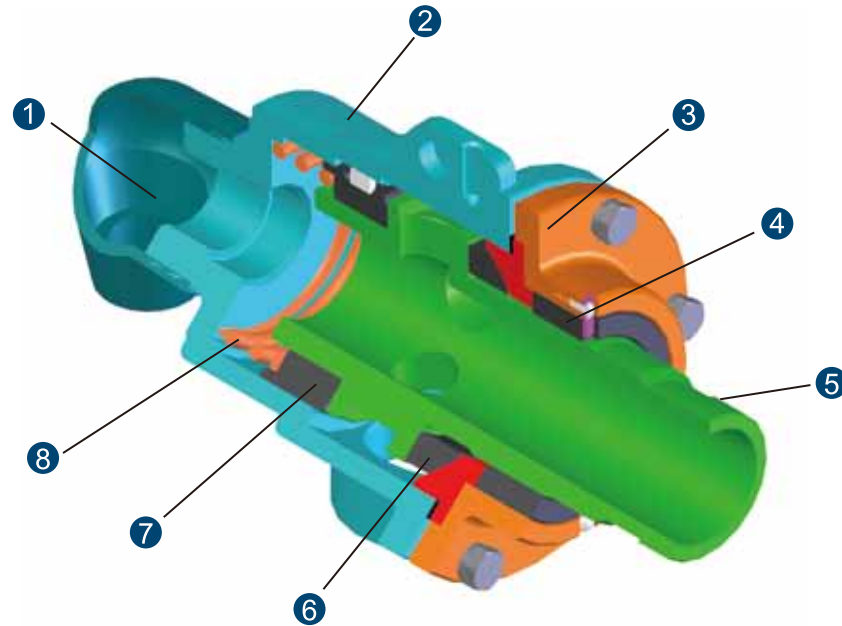
| 型号 model |        | K(BSPT) | O(BSPT)  | I(BSPT)  |          | S(BSP)  | M   | d  | Z  | L1  | L2  | L3 | L4  | L6  | L7  | L8 | L9  | H  | S1 |
|----------|--------|---------|----------|----------|----------|---------|-----|----|----|-----|-----|----|-----|-----|-----|----|-----|----|----|
|          |        |         |          | 单通Mono   | 双通Dual   |         |     |    |    |     |     |    |     |     |     |    |     |    |    |
| 020      | 3/4"   | R3/4"   | Rc3/4"   | Rc3/4"   | Rc1/2"   | G1/4"   | M10 | 22 | 14 | 177 | 106 | 52 | 186 | 97  | 90  | 36 | -   | -  | -  |
| 025      | 1"     | R1"     | Rc3/4"   | Rc1"     | Rc1/2"   | G3/8"   | M10 | 22 | 14 | 215 | 128 | 52 | 234 | 120 | 106 | 36 | 160 | 20 | 16 |
| 032      | 1-1/4" | R1-1/4" | Rc1"     | Rc1-1/4" | Rc3/4"   | G1/2"   | M10 | 29 | 17 | 221 | 129 | 52 | 246 | 122 | 116 | 36 | 167 | 25 | 20 |
| 040      | 1-1/2" | R1-1/2" | Rc1-1/4" | Rc1-1/2" | Rc3/4"   | G3/4"   | M10 | 35 | 17 | 254 | 140 | 62 | 282 | 141 | 131 | 37 | 195 | 30 | 25 |
| 050      | 2"     | R2"     | Rc1-1/2" | Rc2"     | Rc1"     | G1"     | M12 | 43 | 18 | 287 | 160 | 68 | 319 | 154 | 153 | 43 | 218 | 40 | 32 |
| 065      | 2-1/2" | R2-1/2" | Rc2"     | Rc2-1/2" | Rc1-1/4" | G1-1/4" | M12 | 56 | 20 | 324 | 169 | 75 | 363 | 175 | 171 | 54 | 244 | 45 | 40 |
| 080      | 3"     | R3"     | Rc2-1/2" | Rc3"     | Rc1-1/2" | G1-1/2" | -   | 66 | 25 | -   | 290 | 92 | 508 | 248 | 239 | 50 | 360 | 50 | 48 |

注意：随着介质、口径、压力、转速、温度的不同，使用极限也不同，在特殊条件下，请与无锡腾旋公司联系，以确定安全极限。  
Note: Maximum limits vary in relation to changes in media, size, rpm, pressure and temperature. Consult Tengxuan for safe limitations under your specific application conditions.



# SC 型旋转接头

## SC Rotary Joints



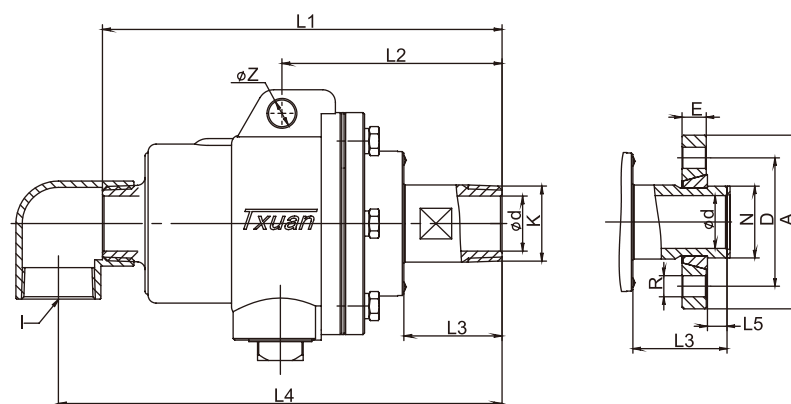
- ① 弯头 Elbow
- ② 壳体 Body
- ③ 端盖 Wear Plate
- ④ 无油轴承 Carbon Guide
- ⑤ 外管 Nipple
- ⑥ 石墨环 Carbon Seal Ring
- ⑦ 无油轴承 Carbon Guide
- ⑧ 弹簧 Spring



|                          |  |
|--------------------------|--|
| 最高车速<br>Max. Speed       | 150 RPM (SN080)<br>100 RPM (SC090/SC100)   |
| 最大压力<br>Max. Pressure    | 20 bar / 300 psig  |
| 最高温度<br>Max. Temperature | 280°C / 536 °F<br>超过280°C时，需要定制<br>(We offer customer designed products<br>beyond 280°C) |
| 适用介质<br>Media            | 蒸汽和导热油<br>Steam, Hot oil   |
| 尺寸范围<br>Sizes            | 3", 4", 5"   |

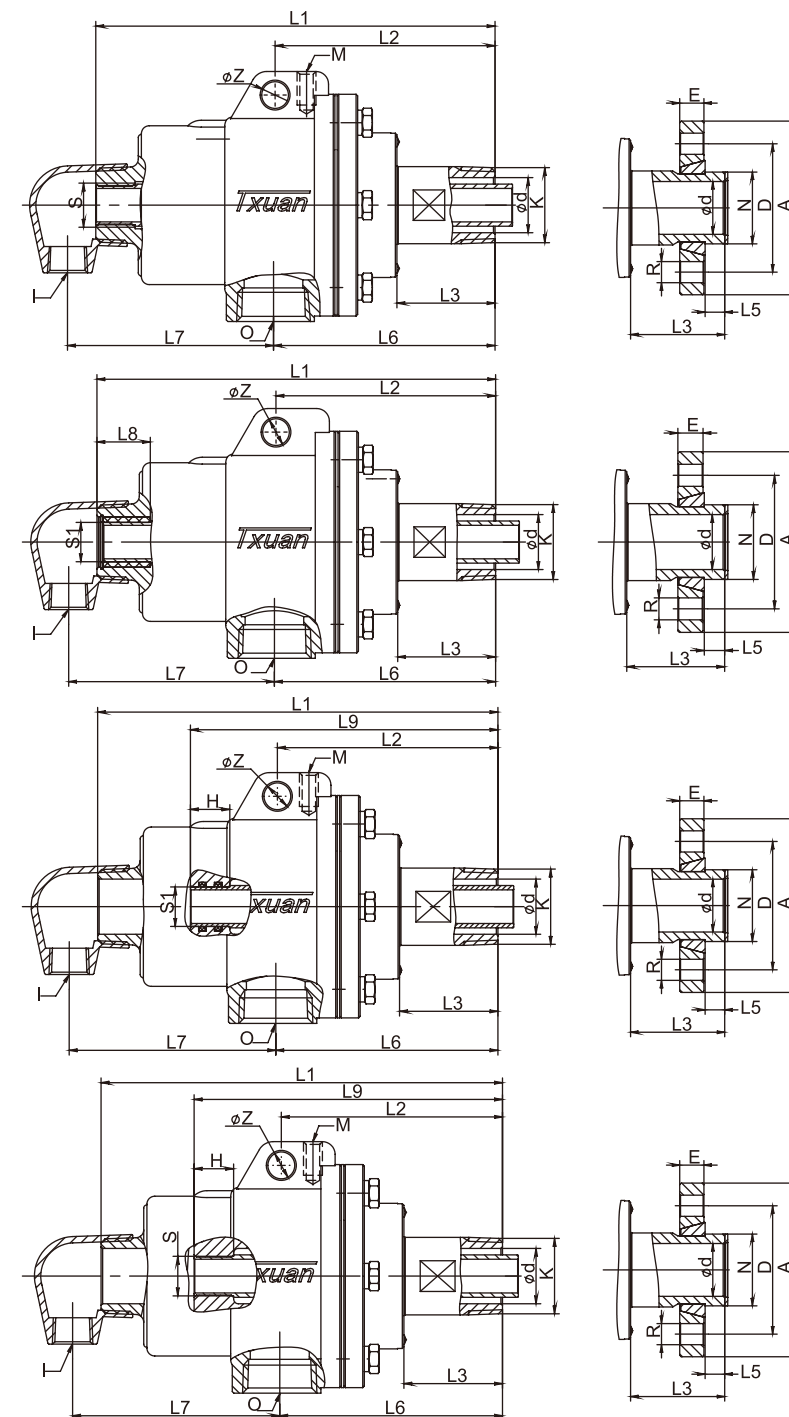
反球面密封设计;  
标准锑或碳石墨密封技术;  
双无油轴承支撑;  
支撑间距最大化;  
延长密封寿命, 提高可靠性;  
易于更换;  
旋转式或固定式虹吸器。

Spherical graphite seal design  
Standard carbon graphite or antimony seal options  
Two internal carbon support guides  
Maximum carbon guide separation  
Extended seal life and increased reliability  
Easy replacement of competitive models  
Rotary or stationary syphon compatibility



### SCM 型旋转接头

单通  
MONO FLOW



### SCS 型旋转接头

双通  
固定式内管  
DUAL FLOW  
STATIONARY INTERNAL PIPE

### SCR 型旋转接头

双通  
旋转式内管  
DUAL FLOW  
ROTARY INTERNAL PIPE

### SCR N 型旋转接头

双通  
旋转式内管  
DUAL FLOW  
ROTARY INTERNAL PIPE

### SCRT 型旋转接头

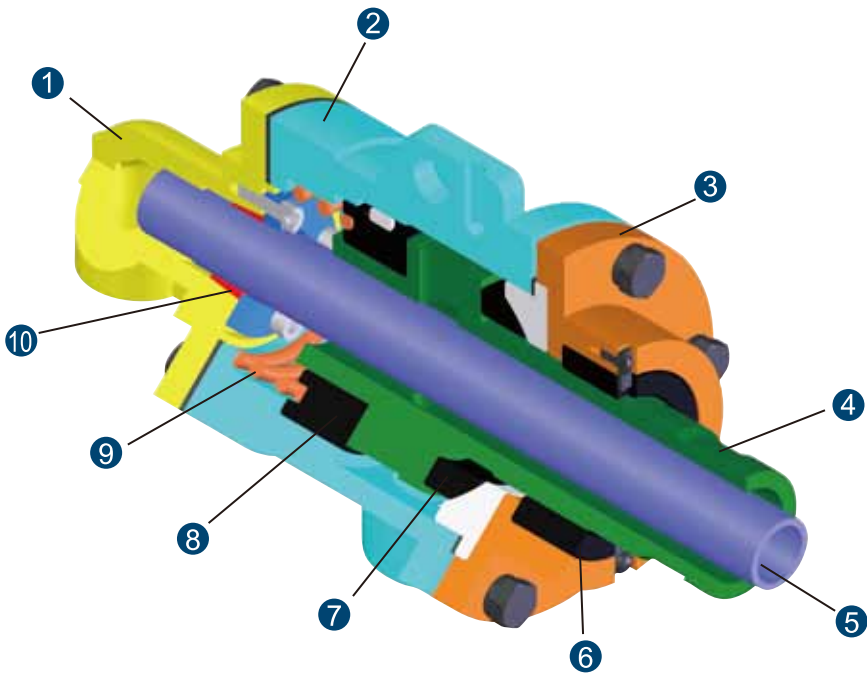
双通  
旋转式内管  
DUAL FLOW  
ROTARY INTERNAL PIPE

| 型号 model   | K       | O        | I        |          | S(BSP)( | M   | d   | Z  | L1   | L2  | L3  | L4  | L6  | L7  | L8 | L9  | H  | S1  |
|------------|---------|----------|----------|----------|---------|-----|-----|----|------|-----|-----|-----|-----|-----|----|-----|----|-----|
|            |         |          | 单通 Mono  | 双通 Dual  |         |     |     |    |      |     |     |     |     |     |    |     |    |     |
| 020 3/4"   | R3/4"   | Rc3/4"   | Rc3/4"   | Rc1/2"   | G1/4"   | M10 | 22  | 14 | 177  | 106 | 52  | 186 | 97  | 90  | 36 | -   | -  | -   |
| 025 1"     | R1"     | Rc3/4"   | Rc1"     | Rc1/2"   | G3/8"   | M10 | 22  | 14 | 215  | 128 | 52  | 234 | 120 | 106 | 36 | 160 | 20 | 16  |
| 032 1-1/4" | R1-1/4" | Rc1"     | Rc1-1/4" | Rc3/4"   | G1/2"   | M10 | 29  | 17 | 221  | 129 | 52  | 246 | 122 | 116 | 36 | 167 | 25 | 20  |
| 040 1-1/2" | R1-1/2" | Rc1-1/4" | Rc1-1/2" | Rc3/4"   | G3/4"   | M10 | 35  | 17 | 254  | 140 | 62  | 282 | 141 | 131 | 37 | 195 | 30 | 25  |
| 050 2"     | R2"     | Rc1-1/2" | Rc2"     | Rc1"     | G1"     | M12 | 43  | 18 | 287  | 160 | 68  | 319 | 154 | 153 | 43 | 218 | 40 | 32  |
| 065 2-1/2" | R2-1/2" | Rc2"     | Rc2-1/2" | Rc1-1/4" | G1-1/4" | M12 | 56  | 20 | 324  | 169 | 78  | 363 | 178 | 171 | 54 | 244 | 45 | 40  |
| 080 3"     | R3"     | Rc2-1/2" | Rc3"     | Rc1-1/2" | G1-1/2" | -   | 66  | 25 | 394  | 290 | 92  | 508 | 248 | 239 | 50 | 349 | 50 | 48  |
| 090 3-1/2" | R3-1/2" | DN65     | Rc3-1/2" | DN50     | G2"     | -   | 80  | 28 | 567  | 350 | 100 | 570 | 305 | 265 | -  | 440 | 60 | 60  |
| 100 4"     | R4"     | DN80     | Rc4"     | DN50     | G2"     | -   | 93  | 28 | 608  | 375 | 96  | 605 | 320 | 285 | -  | 460 | 60 | 60  |
| 125 5"     | R5"     | DN100    | Rc5"     | DN100    | G3"     | -   | 125 | 32 | 535  | 270 | 125 | 630 | 320 | 310 | -  | 445 | 60 | 85  |
| 150 6"     | R6"     | DN125    | Rc6"     | DN125    | G4"     | -   | 145 | 40 | 560  | 295 | 130 | 705 | 340 | 365 | -  | 485 | 85 | 105 |
| 200 8"     | R8"     | DN125    | Rc8"     | DN125    | -       | -   | 195 | -  | 1015 | -   | 150 | -   | 630 | 385 | -  | 770 | 90 | 140 |

注意: 随着介质、口径、压力、转速、温度的不同, 使用极限也不同, 在特殊条件下, 请与无锡腾旋公司联系, 以确定安全极限。  
Note: Maximum limits vary in relation to changes in media, size, rpm, pressure and temperature. Consult Tengxuan for safe limitations under your specific application conditions.

# SCB 型旋转接头

## SCB Rotary Joints

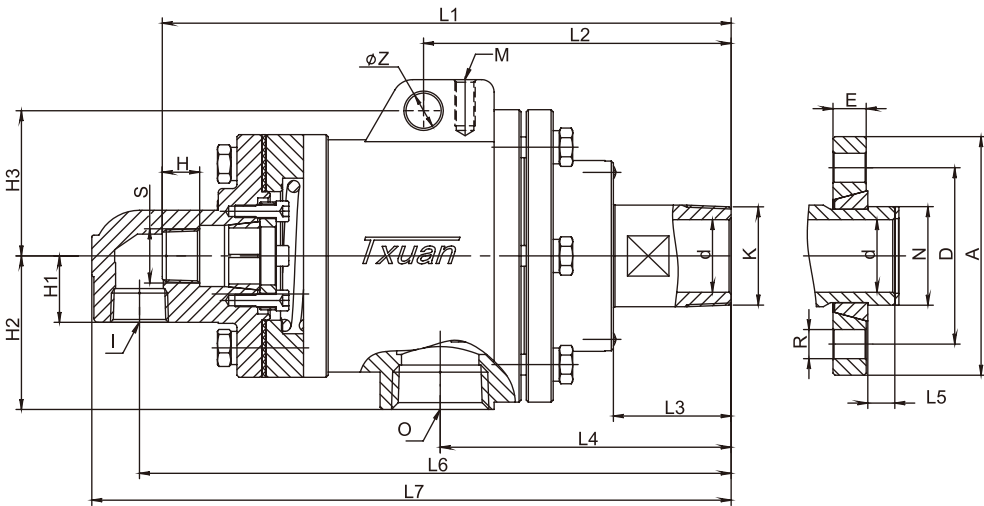


- 1 弯头 Elbow
- 2 壳体 Body
- 3 端盖 Wear Plate
- 4 外管 Nipple
- 5 虹吸管 Syphon pipe
- 6 无油轴承 Carbon Guide
- 7 石墨环 Spherical Seal Ring
- 8 无油轴承 Carbon Guide
- 9 弹簧 Spring
- 10 半分环 Split wedges

|                          |   |
|--------------------------|---|
| 最高车速<br>Max. Speed       | 300 RPM   |
| 最大压力<br>Max. Pressure    | 32 bar / 464 psig   |
| 最高温度<br>Max. Temperature | 280°C/ 536 °F<br>超过280°C时，需要定制<br>(We offer customer designed products<br>beyond 280°C) |
| 适用介质<br>Media            | 蒸汽<br>Steam   |
| 尺寸范围<br>Sizes            | 1-1/4" - 2"   |

半分环固定虹吸管；  
反球面密封设计；  
标准铈或碳石墨密封技术；  
双无油轴承支撑；  
支撑间距最大化；  
延长密封寿命，提高可靠性；  
易于更换；  
旋转式或固定式虹吸器。

Split collar syphon support  
Balanced seal design  
Maximum guide separation  
Convex seal ring in compression  
Extended seal life and increased reliability  
Antimony-immersed seal ring



SCB  
型旋转接头

| 型号 Model      | K(BSPT) | O(BSPT)  | I(BSPT) | S(BSPT) | M   | ΦZ | Φd | L1  | L2  | L3 | L4  | L6  | H  | H1 | H2 | H3 |
|---------------|---------|----------|---------|---------|-----|----|----|-----|-----|----|-----|-----|----|----|----|----|
| SCB032 1-1/4" | R1-1/4" | Rc1"     | Rc3/4"  | Rc1/2"  | M10 | 17 | 29 | 240 | 129 | 52 | 125 | 246 | 17 | 28 | 66 | 62 |
| SCB040 1-1/2" | R1-1/2" | Rc1-1/4" | Rc3/4"  | Rc3/4"  | M10 | 17 | 35 | 275 | 149 | 57 | 140 | 285 | 16 | 32 | 74 | 70 |
| SCB050 2"     | R2"     | Rc1-1/2" | Rc1"    | Rc1"    | M12 | 18 | 43 | 307 | 161 | 67 | 155 | 322 | 19 | 38 | 85 | 82 |

注意：随着介质、口径、压力、转速、温度的不同，使用极限也不同，在特殊条件下，请与无锡腾旋公司联系，以确定安全极限。  
Note: Maximum limits vary in relation to changes in media, size, rpm, pressure and temperature. Consult Tengxuan for safe limitations under your specific application conditions.

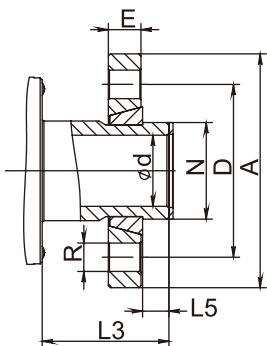


# 配件

## Accessories

轴头快换法兰尺寸对照表

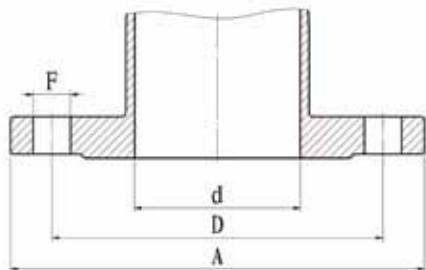
Quick release flanges type K



| Nominal Size |        | ΦA  | ΦD  | ΦN   | E  | R      | L5 |
|--------------|--------|-----|-----|------|----|--------|----|
| 020          | 3/4"   | 80  | 55  | 26   | 14 | 4-Φ 12 | 11 |
| 025          | 1"     | 90  | 65  | 32.3 | 14 | 4-Φ 12 | 11 |
| 032          | 1-1/4" | 100 | 75  | 41   | 16 | 4-Φ 14 | 13 |
| 040          | 1-1/2" | 115 | 85  | 47.5 | 16 | 4-Φ 14 | 13 |
| 050          | 2"     | 125 | 95  | 59   | 16 | 4-Φ 14 | 16 |
| 065          | 2-1/2" | 140 | 110 | 72   | 18 | 4-Φ 14 | 19 |
| 080          | 3"     | 160 | 130 | 90   | 20 | 6-Φ 14 | 25 |
| 090          | 3-1/2" | 180 | 150 | 100  | 20 | 8-Φ 14 | 31 |
| 100          | 4"     | 200 | 165 | 113  | 22 | 8-Φ 16 | 25 |

进出口法兰尺寸对照表

Flanges for housing connections



| 法兰规格 Model |  | Φd | ΦD  | ΦA  | F      |
|------------|--|----|-----|-----|--------|
| DN25 PN16  |  | 25 | 85  | 115 | 4-Φ 14 |
| DN32 PN16  |  | 32 | 100 | 140 | 4-Φ 18 |
| DN40 PN16  |  | 40 | 110 | 150 | 4-Φ 18 |
| DN50 PN16  |  | 50 | 125 | 165 | 4-Φ 18 |
| DN65 PN16  |  | 65 | 145 | 185 | 4-Φ 18 |
| DN80 PN16  |  | 80 | 160 | 200 | 8-Φ 18 |

精心设计、精工制造  
 国际品质、国内价格  
 产品一年免维护  
 完善的技术支持  
 快捷的售后服务  
 提供维护保养培训  
 提供低成本配件及维修服务  
 提供现场指导安装、调试服务  
  
 Carefully design and manufacture  
 High quality, reasonable price  
 Maintenance-free in 1 year  
 Perfect technology support  
 Timely after-service  
 Offer training for maintenance  
 Low price repair parts  
 Installation guide and debugging in spot



## 虹吸器 Syphon



HPS 虹吸硬管  
HPS stationary siphon



SPS 虹吸软管  
SPS soft siphon



ELBOW 虹吸弯头  
ELBOW stationary siphon



SLSS 弹簧锁紧弯头  
SLSS stationary siphon



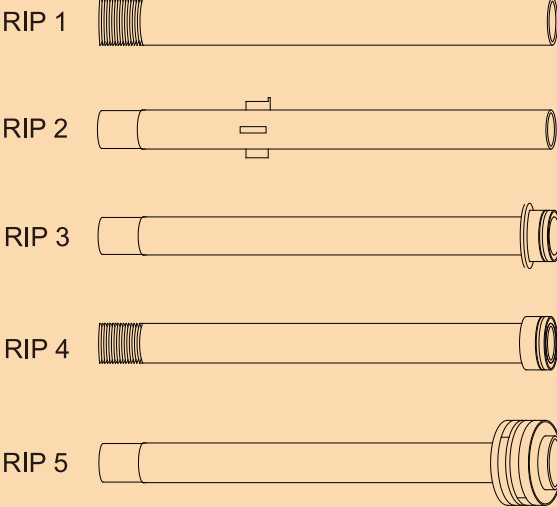
NRS 旋转式虹吸器  
NRS rotary siphon



HRS 旋转式虹吸器  
HRS rotary siphon

## 内管 Internal Pipes

旋转式内管  
rotary internal pipe



固定式内管  
stationary internal pipe

